



Next Generation
Wireless Design

Quick Start Guide

EDX Wireless
PO Box 1547
Eugene, OR 97440
USA

EDX[®] Software

Comprehensive Engineering Software for
Wireless Communication System Design

info@edx.com
www.edx.com

Tel: + 1-541-345-0019
Fax: + 1-541-345-8145

EDX
WIRELESS

EDX
WIRELESS

EDX Quick Start Guide

Thank you for choosing EDX for your RF planning software. This short guide will help you get started with EDX software. Please read this guide first, as it will help you understand the install process and what you may need ahead of time for a successful installation.

What's In The Package

For a new purchase there will be an install CD and a hardware dongle. Depending on your purchase, there may be additional data CDs or DVDs. Please refer to your packing slip or invoice for further information.

The install CD will have the name of the software package purchased, the serial number, and any included optional modules. For troubleshooting and contacting EDX technical support, it is useful to have easy access to the product and serial number.

Data CDs/DVDs will have the name of the type of data on the disc.

The hardware dongle will be one of three colors:

Purple – Stand-alone key. The most common key for single license installations.

Red – Network Key. Used for multiple licenses, or when network sharing of the license is required. NOTE: Additional software is required to complete installation for network operations. Chapter 16 in the reference manual has detailed information and instructions on network key installation (see end of guide for location of reference manual).

Black – Timed keys. They are programmed to expire after a certain amount of time.



Network Key



Stand-Alone Key

Troubleshooting

Installer Fails To Complete

If the EDX program install fails, make note of the error and contact EDX Technical Support. Common reasons include corrupt media, failing drives, insufficient user privileges, or restrictive security settings. NOTE: we do not support installation using windows terminal services.

Error on Program Launch

If the program launch is unsuccessful, you will see an error message(s) stating a hardware key was not found, or that a network key could not be found. The EDX software looks for local keys on the computer USB and parallel ports first. Then it looks over TCP/IP at the local network for an active license manager. If none are found, an error is returned with an error code. Common codes are:

Error 15 - No HASP Key Found

HASP key is not attached, or not active on the local computer. Double check that the HASP key is plugged in and the red activation light is on. You may also check in your computer's device manager that there is a valid entry for the HASP/Aladdin/SRM key. If not, the HASP device drivers may not be installed.

Error 15 - The HASP Network Key returned an error code of 15

The software could not find an active License Manager/network key. Make sure your computer is connected to a LAN and has an active TCP/IP connection/IP address. Make sure your computer can see the computer/IP address where the network key/LM resides.

Error 129 - The correct NetHASP is not connected to the License Manager

The software found an active license manager, but the serial numbers do not match. Make sure you have installed the correct EDX software enabled by that key.

Error 138 - Internal NetHASP error - excessive numbers of Licenses for NetHASP

This error indicates that all licenses are in use.

Reference Materials and Technical Support

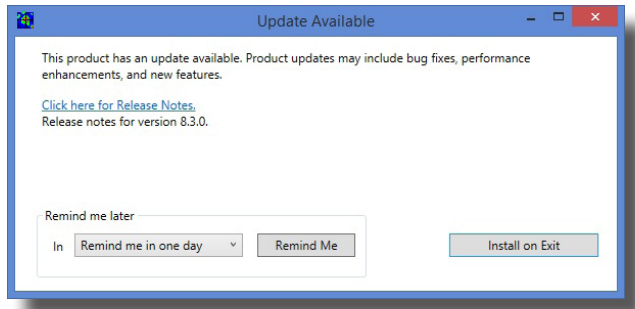
After installation, you have a number of options for support. Within the program, under the help menu, you have access to the software manuals and appendices. The manuals are installed in **C:\Program files\EDX\<EDX software name>\help\pdf**

To contact technical support, you can e-mail us directly at **support@edx.com** or call us at **+1 541.345.0019**, option #2 at the main menu. Visit edx.com for further information.

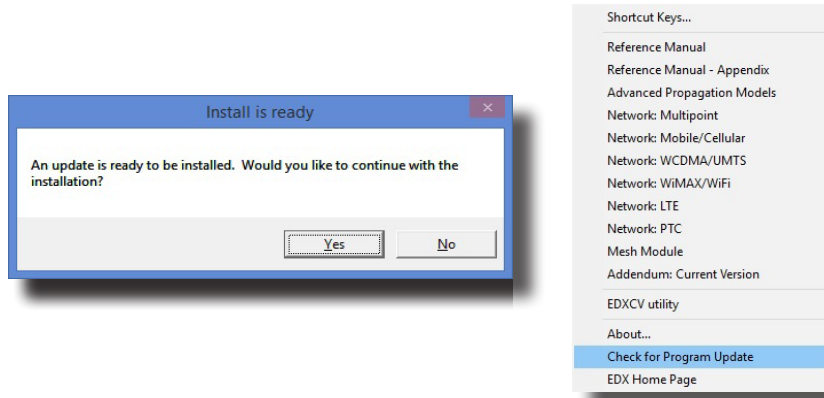
If installed as a stand-alone application check your task bar in the lower right for the License Manager icon. If not found, launch the LM application from the start menu. You can now launch the EDX software. If the program doesn't start (it may take a minute), check the Troubleshooting section or contact EDX Technical Support for additional help.

Automatic Updates

When updates become available, you will be prompted upon launching the software to install the latest version (provided you have a valid maintenance agreement).



This dialog contains options for viewing the release notes of the new version, several "Remind Me" options as well as the option to install the update upon exit. If the "Install on Exit" option is chosen, you will be prompted to install the update upon shutting down the program. You may also check manually for program updates in the 'Help' Menu:

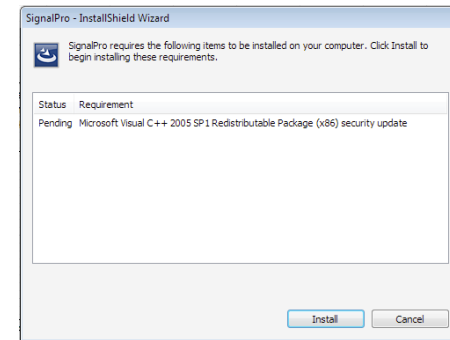


Installing the software

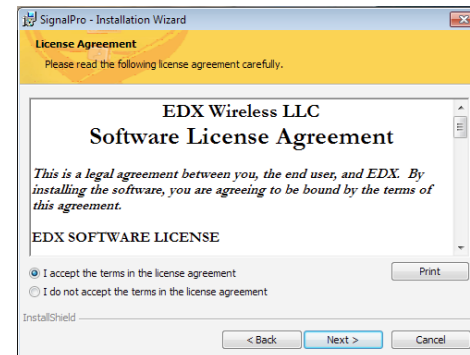
IMPORTANT: Do not attach the hardware dongle until directed to do so in this guide.

Put the software install CD into your CD drive. Normally, the software should start the install process automatically. On some computers, this feature is disabled. If after a few minutes, nothing appears to be happening, navigate to the CD and double-click on the application **Setup.exe** to start the process.

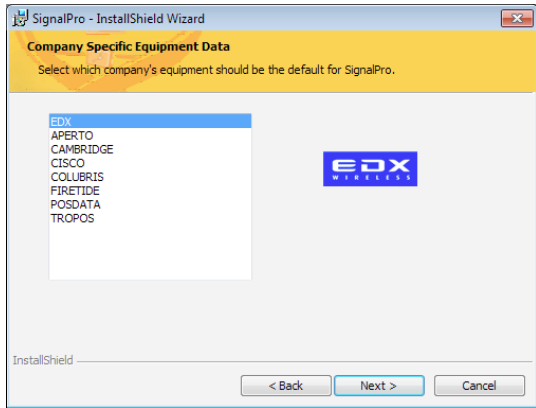
The installer first checks for a Microsoft Visual C++ runtime installation and .NET framework. If none are found, or if an earlier version than is present on the CD is found, you will be prompted to install.



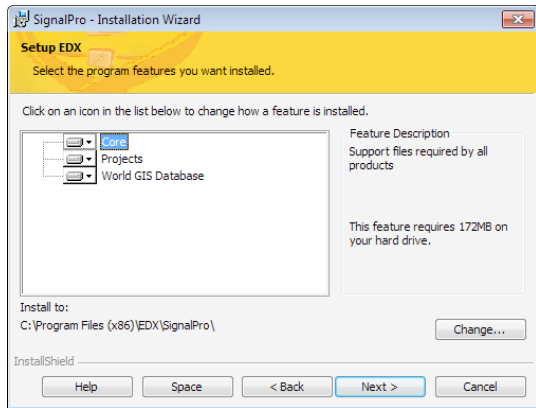
If you already have the proper versions installed, you will not see this dialog box. Once complete, the EDX software installer launches. You are presented with the License Agreement. To install, accept the agreement and click **next** to continue.



You will now be presented with an equipment selection dialog box. This chooses the equipment files that get loaded as the program default. NOTE: all the equipment files in the list are installed in sub folders in the install directory located at *<install directory>/Library data/Equipment*, and can be accessed through the software. If you don't work specifically with one of the vendors listed, choose EDX and click **next**.

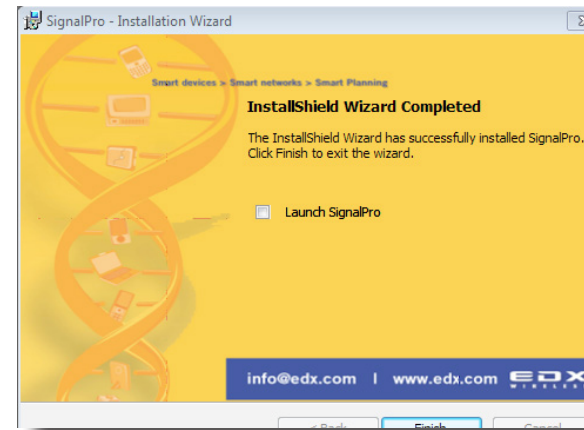


You will now see the screen below, where you can set the program install location. Do not change any of the installed features listed in the top portion of the dialog box. Doing so may cause the installer to exit ungracefully. In the lower portion of the dialog box is the default install directory. If you want to install more than one version of the same program, i.e. Signal Pro 8.2 and 8.3, change the default directory so we don't overwrite your current version. Click **Next** to continue.



During this process the program executable is installed along with the help documentation and software manuals. The Aladdin HASP drivers that allow the software and Windows to recognize and use the hardware dongle supplied with the software are also installed at this time. This is done in a command-line window, and may not be visible during your installation.

Once this installation is complete, you will see a completion screen with an option to launch EDX software. Insert the stand-alone hardware key. A red light will come on in the key, and windows will notify you that your new hardware is ready to use. Click **Finish** to exit the installer and launch the EDX program. If successful, you will see the EDX program screen with a gray window ready for you to open a project. To test you can go to the menu **File>Recent Projects** and select one of the demo projects in the list. It should open the selected project for you to work with.



Network Key Installation

For network keys (red), we use a key server. This does not have to be the computer the EDX software is installed on, just a machine visible to all computers that want to access the key. Two pieces of software are used; the HASP device drivers, and the License Manager. If you are installing the key on a machine that will not host the EDX application software you need to download the **Sentinal_HASP_run-time_setup.zip** and **HASP_LM_setup.zip** from <http://www3.safenet-inc.com/support/hasp/enduser.aspx>. Unzip and run the first file to install the device drivers. This set-up is not necessary if you've completed the regular software installation.

Attach the network hardware key to the machine to be used as a server. A red light will come on in the key, and Windows will provide a notification that the new hardware is ready to use. Unzip and run the LM setup to install the license manager.