

Signal I-O

VENDOR-NEUTRAL DESIGN FOR INDOOR AND INDOOR-OUTDOOR NETWORKS

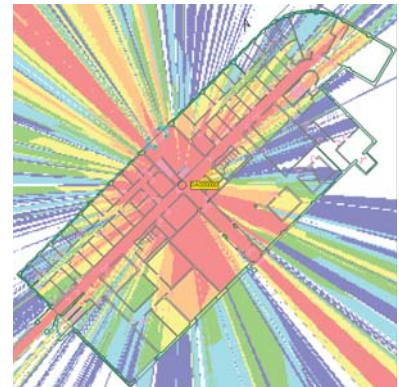
Signal I-O is a complete indoor design suite offering a comprehensive and vendor-neutral approach to the design and planning of in-building, campus and metro service area networks. The solution allows users to import and/or automatically create floor plans, assign wall characteristics and analyze propagation within the 3D space. In addition, Signal I-O contains asset management features to plan components, cables, connectors and more while also producing system reports.

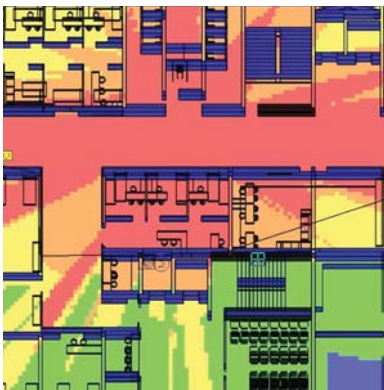
3D Modeling

Import floor plan files directly to create a 3D model of the building to be used for system layout and coverage prediction. Or use the automatic converter to import a floor plan image file and assign walls with their RF material and height parameters.

Indoor/Outdoor

With numerous studies available and both indoor and outdoor propagation models, Signal I-O utilizes terrain elevation, clutter and 3D building data to analyze indoor-to-outdoor as well as outdoor-to-indoor coverage, ensuring isolation and/or predicting handoff issues between these networks.





Multiple Floor/Building Design

Run studies over multiple floors or multi buildings in one project. The system management tools allow engineers to place equipment running over several floors and perform analysis on any portion of the configured building.

Equipment

Define any number of devices, antennas or cables in your plan and use the schematic view to check connections. Run the link budget calculation for each antenna in the network. Configure both active and passive devices in your design.

Cirrus Data Subscription Service

Add a subscription of EDX Cirrus high-resolution data for use in Signal I-O. Cirrus data provides an accurate depiction of service area environments that takes into account land use considerations, terrain and other factors that affect system performance. Databases are updated regularly, ensuring users have the most current and accurate information available.

Area/Coverage Studies

For projects within Signal I-O, you can set up as many area studies as you like – each based on unique parameters and considering the same or different transmitter groups. For complete coverage calculation, Signal I-O offers an extensive list of studies analyzing received power, uplink/downlink signal levels, interference, simulcast considerations and more.

Microwave point-to-point analysis

The comprehensive path analysis available in Signal I-O contains rain/fade outages, percent availability and dispersive fade margin along with other considerations. Adjustable parameters allow you to add trees, buildings or other environmental factors to enhance the accuracy of the link study. In addition, the interactive display depicts “real-time” link analysis.